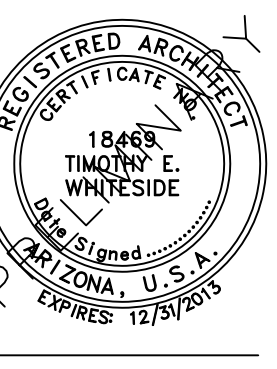


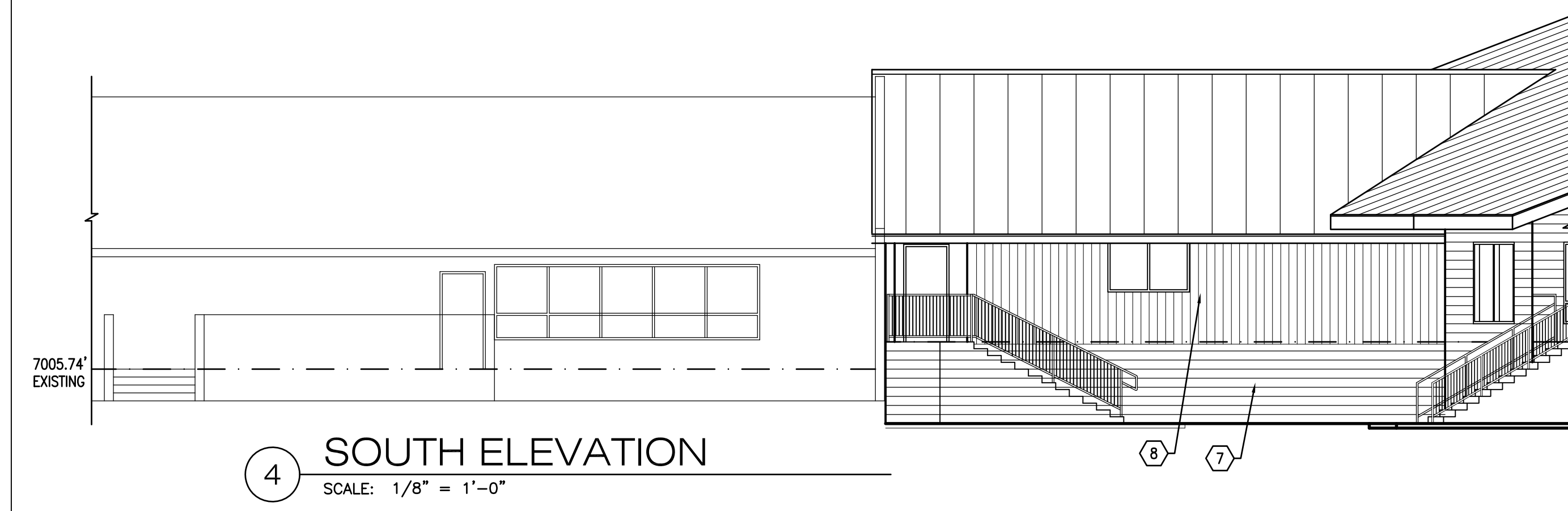
KEYNOTES:

1. EXISTING VERTICAL REDWOOD T&G SIDING TO REMAIN
2. EXISTING 4" HIGH SLUMP BLOCK MASONRY TO REMAIN
3. EXISTING PAINTED WOOD FASCIA TO REMAIN
4. EXISTING COMPOSITION SHINGLE ROOF FUTURE REPLACEMENT WITH STANDING SEAM METAL
5. STANDING SEAM METAL ROOF
6. PREFINISHED METAL FASCIA
7. INTEGRAL COLOR SPLIT FACE CMU, 8x8x16
8. VERTICAL REDWOOD T&G SIDING, STAINED TO MATCH EXISTING
9. ALUMINUM CLAD WOOD WINDOW, DARK BRONZE FINISH
10. INTEGRAL COLOR EIFS
11. ALUMINUM STOREFRONT ENTRY SYSTEM

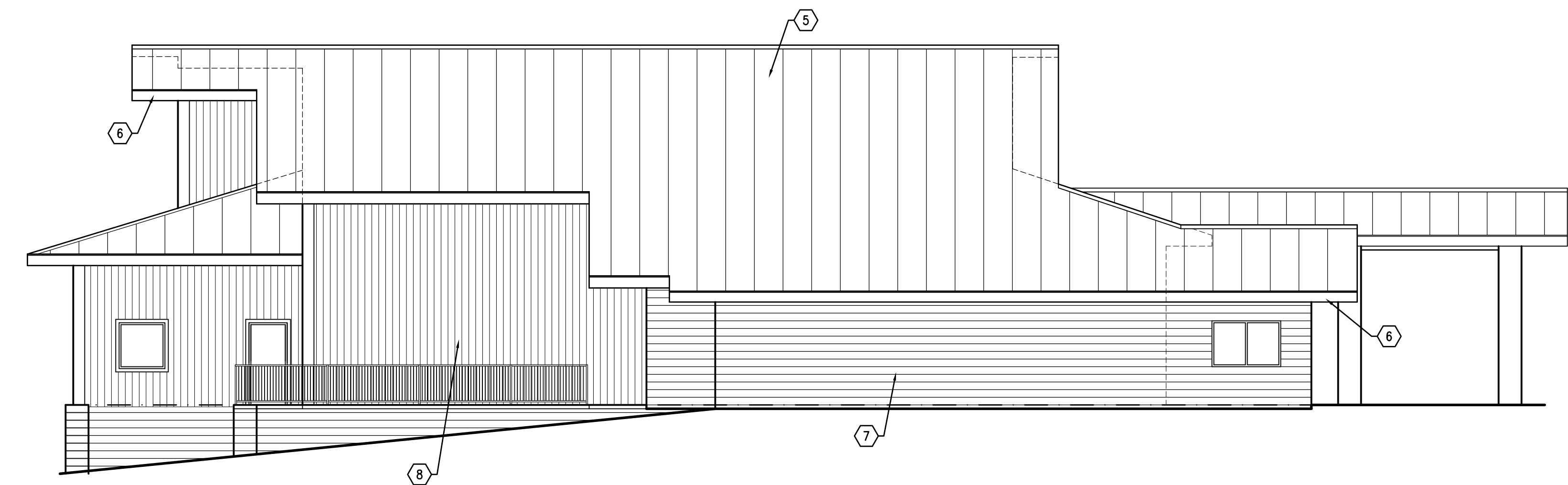


JOHNSON WALZER ASSOCIATES LLC, 17 NORTH SAN FRANCISCO STREET, SUITE 3A, FLAGSTAFF, ARIZONA 86001 (928) 779-0470

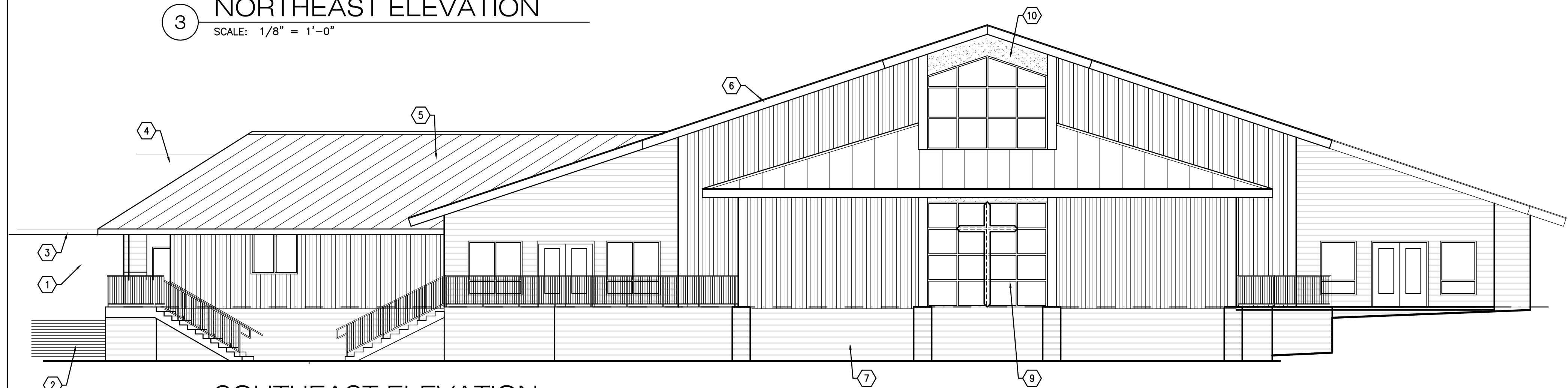
PEACE LUTHERAN CHURCH
EAST ADDITION
FLAGSTAFF, ARIZONA



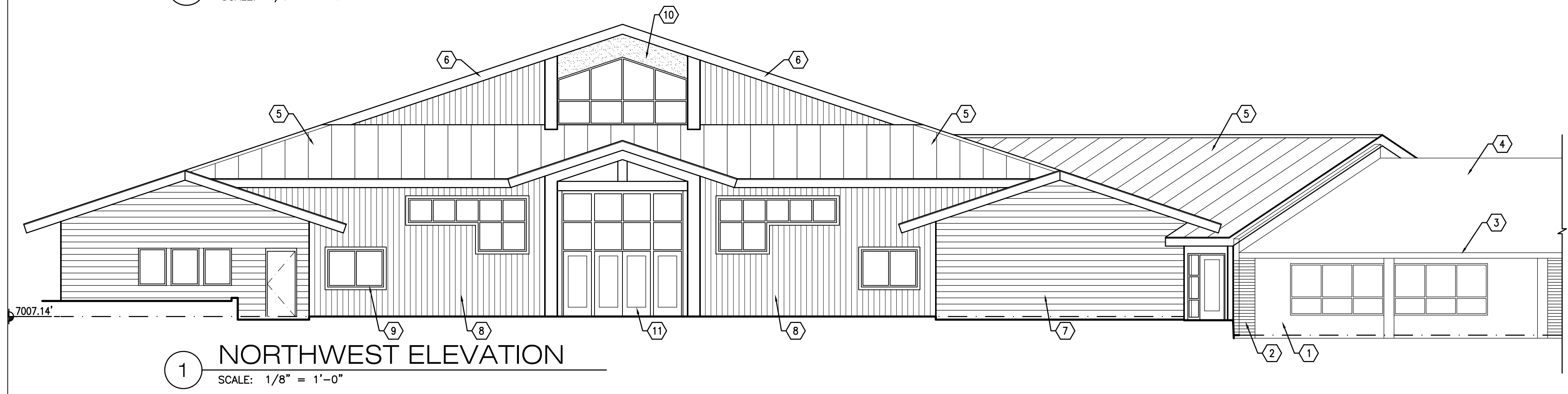
4 SOUTH ELEVATION
SCALE: 1/8" = 1'-0"



3 NORTHEAST ELEVATION
SCALE: 1/8" = 1'-0"



2 SOUTHEAST ELEVATION
SCALE: 1/8" = 1'-0"



1 NORTHWEST ELEVATION
SCALE: 1/8" = 1'-0"

SD

PROJECT: 11017
SCALE: SEE DRAWING
DRAWN BY: Tjodie
CHECKED BY: TW
DATE: DECEMBER 2011

TITLE: BUILDING ELEVATIONS

A4.0