

KEYNOTES:

- 1 TREE TO BE REMOVED, TYPICAL
- 2 REMOVE CONCRETE SLAB
- 3 REMOVE ASPHALT
- 4 EXISTING DRIVE TO REMAIN
- 5 EXISTING ASPHALT TO REMAIN
- 6 REMOVE SHED
- 7 REMOVE BBQ
- 8 REMOVE FENCE
- 9 REMOVE PORTION OF ROOF
- 10 REMOVE LIGHTPOLE AND BASE
- 11 EXISTING ACCESSIBLE RAMP TO REMAIN
- 12 TREE TO REMAIN, TYPICAL
- 13 EXISTING RAILROAD TIE
- 14 EXISTING STREET LIGHT
- 15 EXISTING LIGHT AND POLE TO REMAIN
- 16 REMOVE SPOTLIGHT
- 17 EXISTING LIGHT TO REMAIN
- 18 REMOVE SURFACE MOUNTED LIGHT
- 19 SNOW FENCE PROTECTION AT RESOURCE PRESERVATION AREAS, INSTALL PRIOR TO START OF DEMOLITION.
- 20 EXISTING FENCE TO REMAIN
- 21 EXISTING ROCKY AREA TO REMAIN

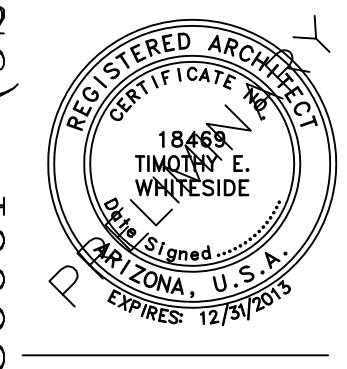
GENERAL NOTES:

- G1. PROJECT ADDRESS: 3430 NORTH FOURTH STREET
FLAGSTAFF, ARIZONA
- G2. DEMOLITION PLAN BASED ON PREVIOUS SITE ANALYSIS, WHICH IDENTIFIED TREES, SLOPE AND ROCKY AREAS, TO ADDRESS IN FINAL DESIGN.
- G3. ASSESSOR NO. 108-01-001D

SYMBOLS:

- PINE TREE TO BE REMOVED
- OAK TREE TO BE REMOVED
- SHRUB TO BE REMOVED
- JUNIPER TO BE REMOVED
- PINE TREE TO REMAIN
- OAK TREE TO REMAIN
- EXISTING SHRUB TO REMAIN
- JUNIPER TO REMAIN

1 DEMOLITION SITE PLAN
SCALE: 1" = 20'-0"



JOHNSON WALZER ASSOCIATES LLC, 17 NORTH SAN FRANCISCO STREET, SUITE 3A, FLAGSTAFF, ARIZONA 86001 (928) 779-0470

PEACE LUTHERAN CHURCH
EAST ADDITION
FLAGSTAFF, ARIZONA

SD
PROJECT: 11017
SCALE: SEE DRAWING
DRAWN BY: Tjodie
CHECKED BY: TW
DATE: DECEMBER 2011
REV. JAN. 19, 2012

TITLE: SITE PLAN DEMOLITION

ASD1.0